

BASIC ROLFING® CERTIFICATION FLOW CHART

Foundations of Rolfing Structural Integration

EDUCATION

Prior to Admissions

Completion of the Rolfing Ten-Series with a Certified Rolfer™.



Admissions to The Rolf Institute®

1. Documentation that the student is beyond the age of compulsory education via submission of **ONE** of the following:
 - a) High school diploma or
 - b) GED or
 - c) Transcripts that show at least 60+ semester hours from an institution of higher education.
2. Submission of a written two to three page essay describing how your life experience demonstrates your ability to follow a course-of-study to completion.
3. Completion and approval of an application and required enrollment forms.
4. Submission of a resume and 2 photographs (for identification purposes).
5. Verification of having received the Rolfing Ten-Series from a Certified Rolfer



Phase I: Foundations of Rolfing Structural Integration

218 HOURS. MEETS FOUR TO FIVE DAYS A WEEK FOR SIX WEEKS \$3,945

A three-month study interval is required between Foundations of Rolfing Structural Integration and Embodiment of Rolfing SI and Rolf Movement® Integration.

Prior to Embodiment of Rolfing SI and Rolf Movement Integration:

- 50 hours of Skillful Touch and two written essays must be completed.
- Verification of having received five Rolf Movement Integration sessions from a Certified Rolf Movement Practitioner.

Written assignments are due four weeks before Embodiment of Rolfing SI and Rolf Movement Integration begins.

Phase II: Embodiment of Rolfing Structural Integration and Rolf Movement Integration

244 HOURS. MEETS FOUR TO FIVE DAYS A WEEK FOR EIGHT WEEKS \$6,525

A three-month study interval is required between Embodiment of Rolfing SI and Rolf Movement Integration and Clinical Application of Rolfing Theory.

A mentorship with a Rolfer for supervision and practice of skills is highly recommended during the study interval between Embodiment of Rolfing SI and Rolf Movement Integration and Advanced Rolfing Certification Program.



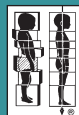
Phase III: Clinical Application of Rolfing Theory

269 HOURS. MEETS FOUR TO FIVE DAYS A WEEK FOR EIGHT WEEKS \$6,830



THE ROLF INSTITUTE MEMBERSHIP

Access to Rolf Institute service marks and membership benefits.
YOU'RE A CERTIFIED ROLFERTM!



MEMBERSHIP

Optional Rolf Movement Integration Certification

Offered approximately once a year; may be completed after completing the basic Rolfing Certification Program. \$3,200

YOU'RE A CERTIFIED ROLF MOVEMENT® PRACTITIONER

Required Continuing Education

Graduates agree to attend a minimum of 18 days of approved CE over a period of three to seven years as prerequisite preparation for Advanced Rolfing Certification. If certified as a Rolf Movement Practitioner, Rolfers have up to 9 years to complete CE credits and enroll in the Advanced Certification Program.

Advanced Rolfing Certification Program

Prerequisites for the Advanced Rolfing Certification Program are completion of the basic Rolfing Certification Program, 18 days of approved CE hours over a three to seven-year period, or over a nine-year period if certified as a Rolf Movement Practitioner.

Meets four days a week for six consecutive weeks, or in two three-week segments, spaced two to six months apart. \$5,500

YOU'RE A CERTIFIED ADVANCED ROLFERTM!